

Cookies helfen uns bei der Bereitstellung von Pollen-Wiki. Durch die Nutzung von Pollen-Wiki erklärst du dich damit einverstanden, dass wir Cookies speichern. [Weitere Informationen](#)

Okay

# Kategorie:Sporen

---

## 36 Sporen

---

Hier werden die Sporen von Farnartigen (Pteridophyta), Moosen (Bryophyta) und Pilzen (Mycophyta) aufgeführt

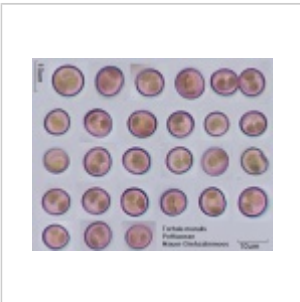
## Liste der Sporenen

---

► [Sporen](#) (44 S, 85 D)

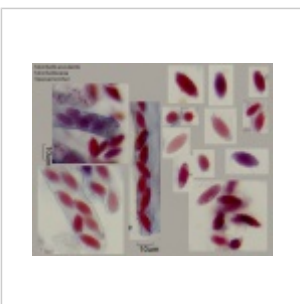
## Pollengrösse Sporen

- Size very small

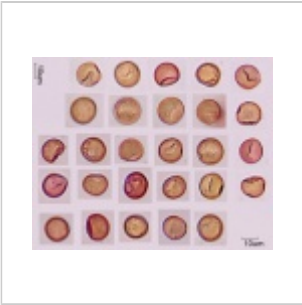


[Tortula murallis.jpg](#) 640  
× 512

- Size small

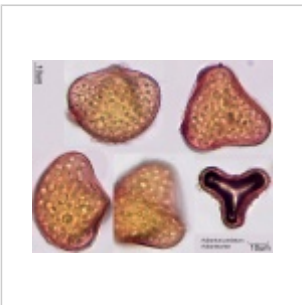


[Morchella esculenta.jpg](#)  
640 × 512

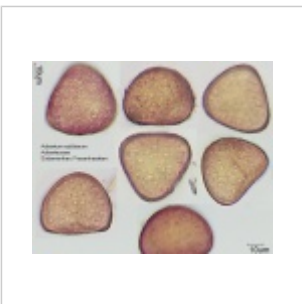


Polytrichum  
commune.jpg 640 ×  
512

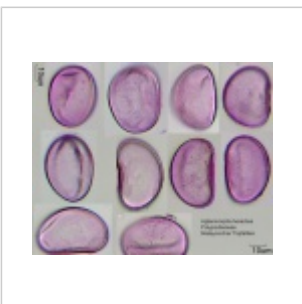
▪ **Size medium**



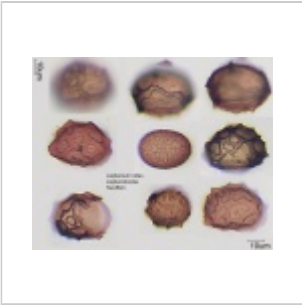
Adiantum pedatum.jpg  
640 × 512



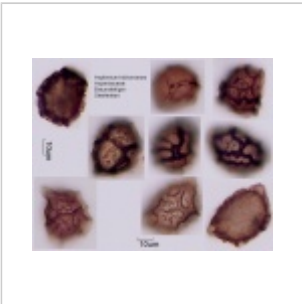
Adiantum  
raddianum.jpg 640 ×  
512



Aglaomorpha  
heraclea.jpg 640 × 512



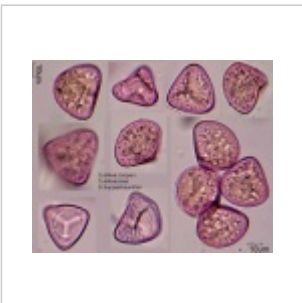
Asplenium nidus.jpg  
640 × 512



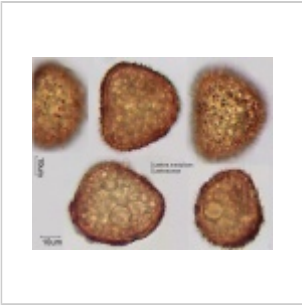
Asplenium trichomanes.jpg 640 × 512



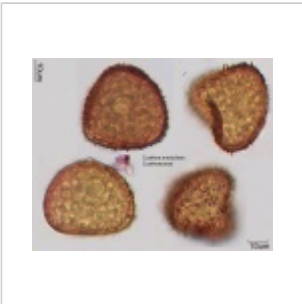
Athyrium niponicum.jpg  
640 × 512



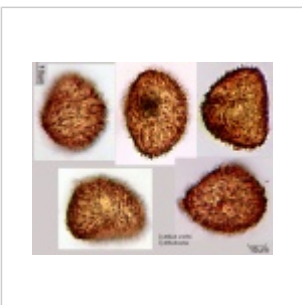
Cyathea cooperi.jpg  
640 × 512



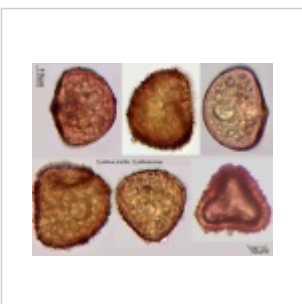
Cyathea medullaris  
(1).jpg 640 × 512



Cyathea medullaris.jpg  
640 × 512



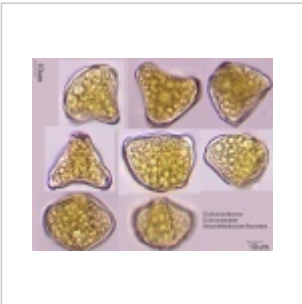
Cyathea smithii (1).jpg  
640 × 512



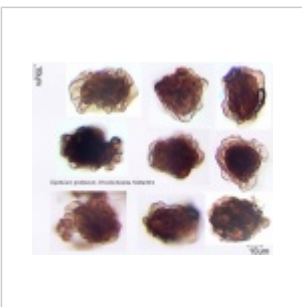
Cyathea smithii.jpg 640  
× 512



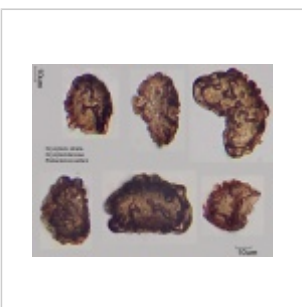
Davallia canariensis.jpg  
640 × 512



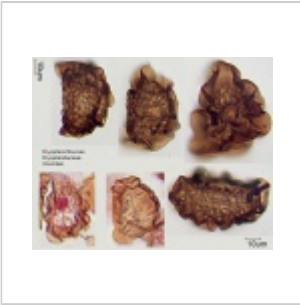
Dicksonia fibrosa.jpg  
640 × 512



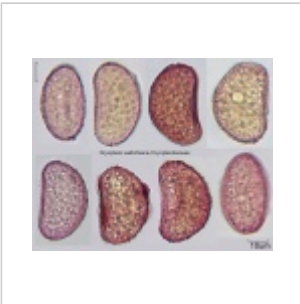
Diplazium proliferum.jpg  
640 × 512



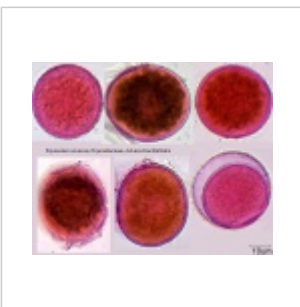
Dryopteris atrata.jpg  
640 × 512



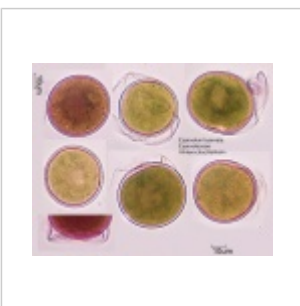
Dryopteris filix-mas.jpg  
640 × 512



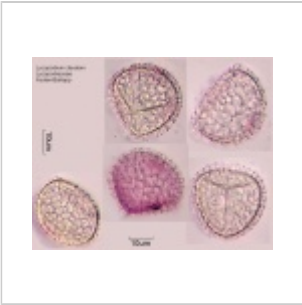
Dryopteris wallichiana (1).jpg 640 × 512



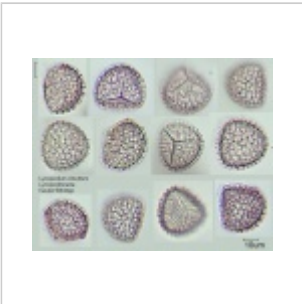
Equisetum arvense.jpg  
640 × 512



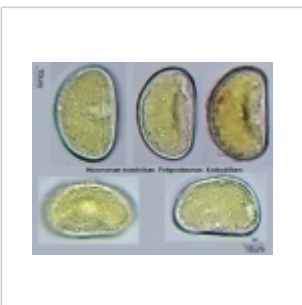
Equisetum hyemale.jpg  
640 × 512



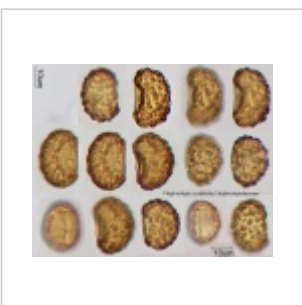
Lycopodium clavatum  
CZP.jpg 640 × 512



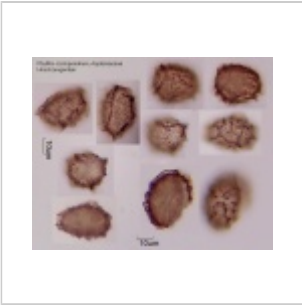
Lycopodium  
clavatum.jpg 640 × 512



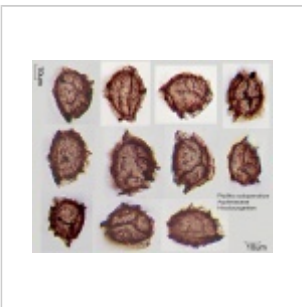
Microsorium  
musifolium.jpg 640 ×  
512



Nephrolepis  
cordifolia.jpg 640 × 512



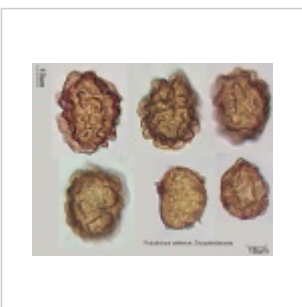
Phyllitis  
scolopendrium.jpg 640  
× 512



Phyllitis  
scolopendrium1.jpg 640  
× 512

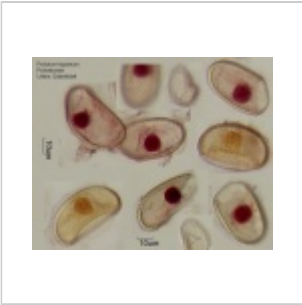


Polystichum  
polyblepharum.jpg 640  
× 512

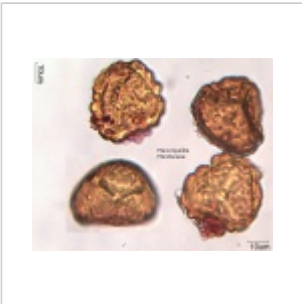


Polystichum  
setiferum.jpg 640 ×  
512

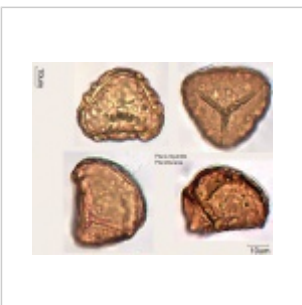




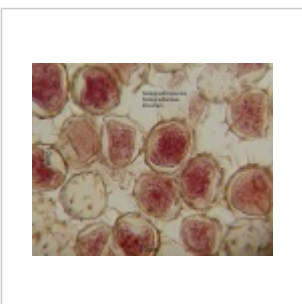
Psilotum triquetrum.jpg  
640 × 512



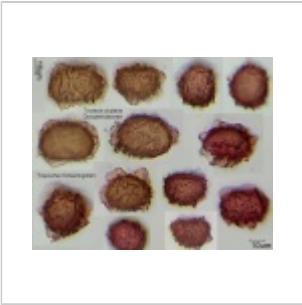
Pteris tripartita (1).jpg  
640 × 512



Pteris tripartita.jpg 640  
× 512



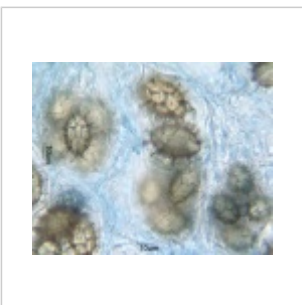
Selaginella species.jpg  
639 × 511



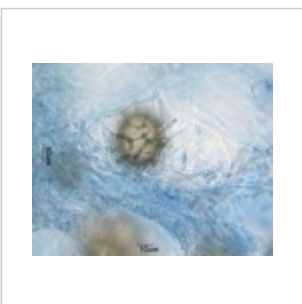
Tectaria cicutaria.jpg  
640 × 512



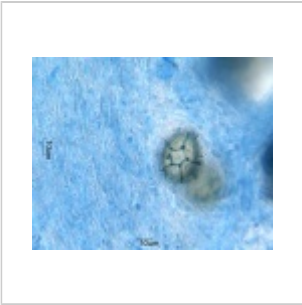
Tuber aestivum (1).jpg  
640 × 512



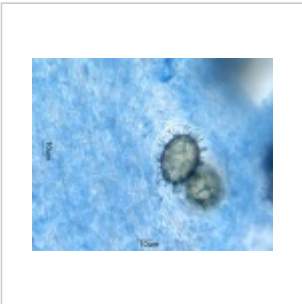
Tuber aestivum (10).jpg  
640 × 512



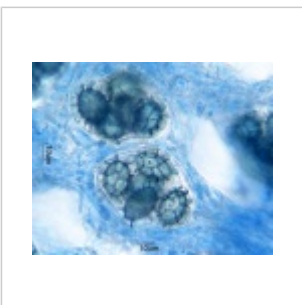
Tuber aestivum (11).jpg  
640 × 512



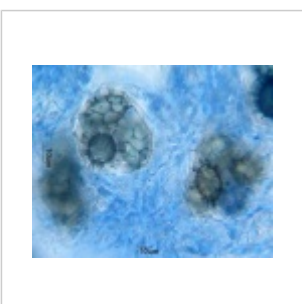
Tuber aestivum (12).jpg  
640 × 512



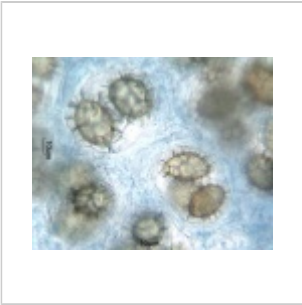
Tuber aestivum (13).jpg  
640 × 512



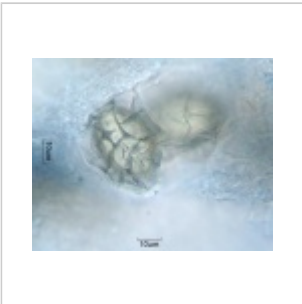
Tuber aestivum (14).jpg  
640 × 512



Tuber aestivum (15).jpg  
640 × 512



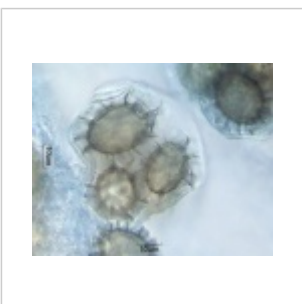
Tuber aestivum (16).jpg  
640 × 512



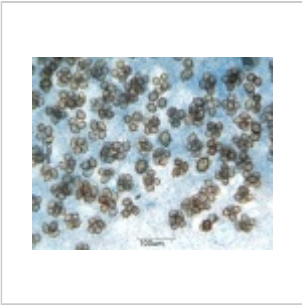
Tuber aestivum (17).jpg  
640 × 512



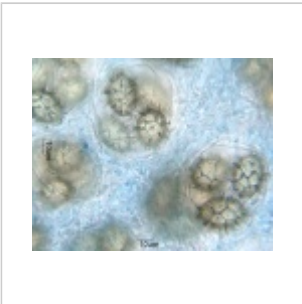
Tuber aestivum (18).jpg  
640 × 512



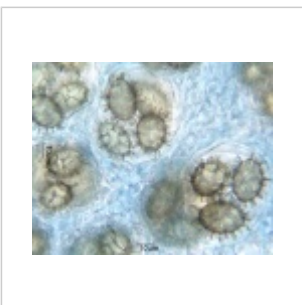
Tuber aestivum (19).jpg  
640 × 512



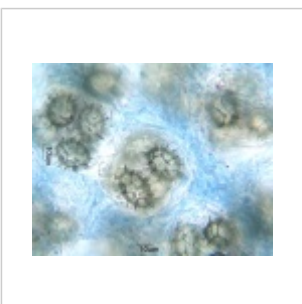
Tuber aestivum (5).jpg  
640 × 512



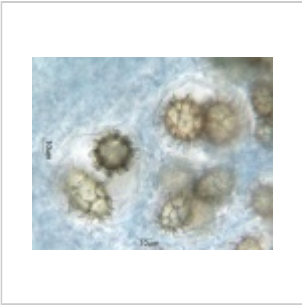
Tuber aestivum (6).jpg  
640 × 512



Tuber aestivum (7).jpg  
640 × 512



Tuber aestivum (8).jpg  
640 × 512



Tuber aestivum (9).jpg  
640 × 512



Tuber aestivum CZP (1).jpg 640 × 512



Tuber aestivum CZP (2).jpg 640 × 512



Tuber albidum (1).jpg  
640 × 512



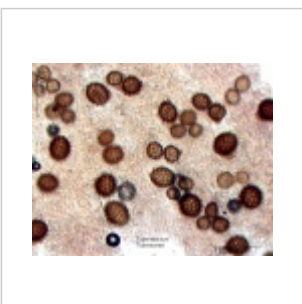
Tuber albidum (2).jpg  
640 × 512



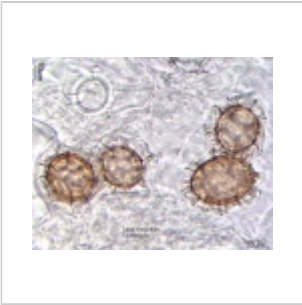
Tuber albidum (3).jpg  
640 × 512



Tuber albidum (4).jpg  
640 × 512



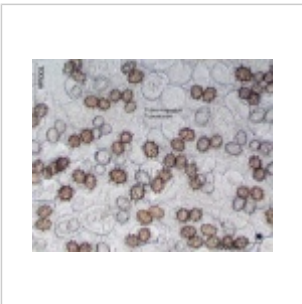
Tuber albidum.jpg 640  
× 512



Tuber magnatum  
(1).jpg 640 × 512



Tuber magnatum  
(2).jpg 640 × 512



Tuber magnatum  
(3).jpg 640 × 512

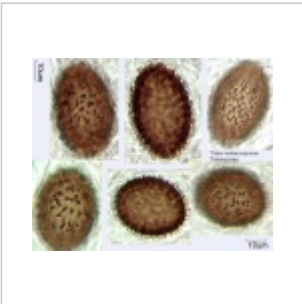


Tuber magnatum  
(4).jpg 640 × 512





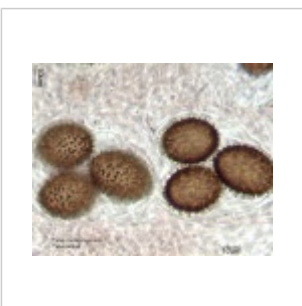
Tuber magnatum.jpg  
640 × 512



Tuber melanosporum  
(1).jpg 640 × 512



Tuber melanosporum  
(2).jpg 640 × 512



Tuber melanosporum  
(3).jpg 640 × 512



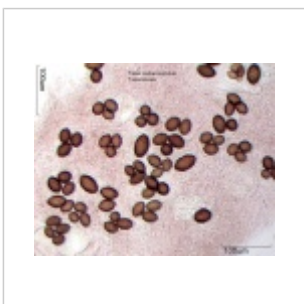
Tuber melanosporum  
(4).jpg 640 × 512



Tuber melanosporum  
(5).jpg 640 × 512



Tuber melanosporum  
(6).jpg 640 × 512

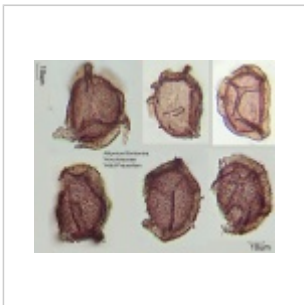


Tuber  
melanosporum.jpg 640  
× 512

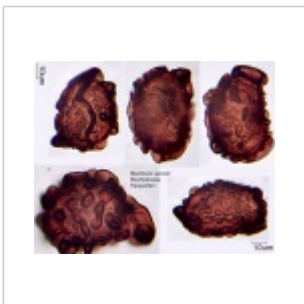


Woodsia  
polystichoides.jpg 640  
× 512

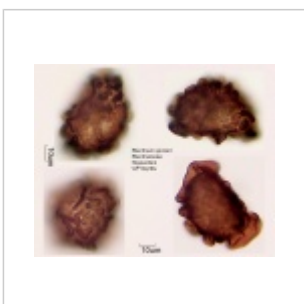
▪ **Size large**



Athyrium filix-  
femina.jpg 640 × 512



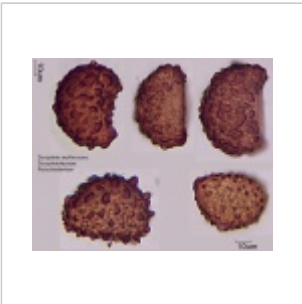
Blechnum spicant  
(1).jpg 640 × 512



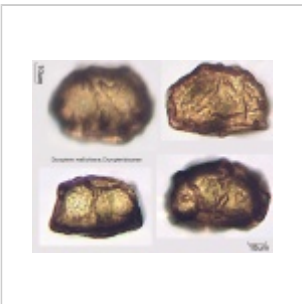
Blechnum spicant  
(2).jpg 640 × 512



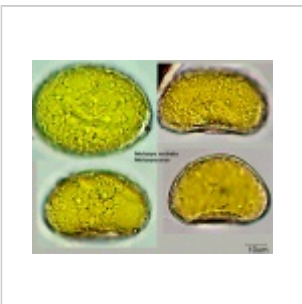
Cyrtomium fortunei.jpg  
640 × 512



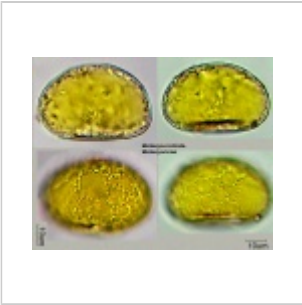
Dryopteris erythrosora.jpg 640 × 512



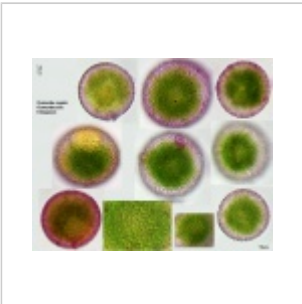
Dryopteris wallichiana.jpg 640 × 512



Metaxya rostrata (1).jpg  
640 × 512



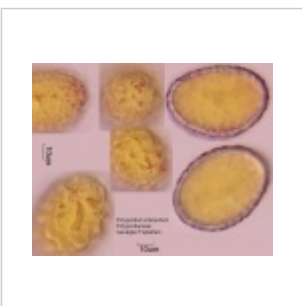
Metaxya rostrata (2).jpg  
640 × 512



Osmunda regalis (1).jpg  
1.280 × 1.024



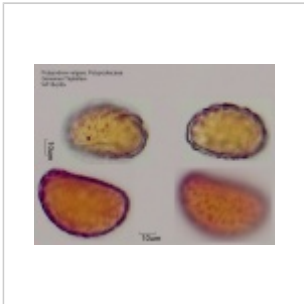
Osmunda regalis.jpg  
640 × 512



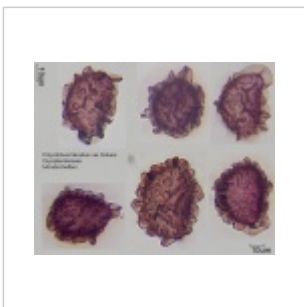
Polypodium interjectum.jpg 640 × 512



Polypodium vulgare  
(1).jpg 648 × 486



Polypodium vulgare  
(2).jpg 648 × 486



Polystichum  
falcatum.jpg 640 × 512

Pollenkorndurchmesser. VerySmall < 15; Small 15 bis 25; Medium 26 bis 50; Large 51 bis 100; VeryLarge > 100 µm.

---

Abgerufen von „<https://pollen.tstebler.ch/MediaWiki/index.php?title=Kategorie:Sporen&oldid=45217>“

---

**Diese Seite wurde zuletzt am 24. Mai 2020 um 12:07 Uhr bearbeitet.**

Diese Seite wurde bisher 1.057 mal abgerufen.

Der Inhalt ist verfügbar unter der Lizenz [Creative Commons 'Namensnennung'](#) , sofern nicht anders angegeben.